

# WL SECURE REMOTE SERVICING FOR MACHINE MANUFACTURERS TO SECURE AND INDUSTRIALIZE THEIR REMOTE SERVICING OFFERING

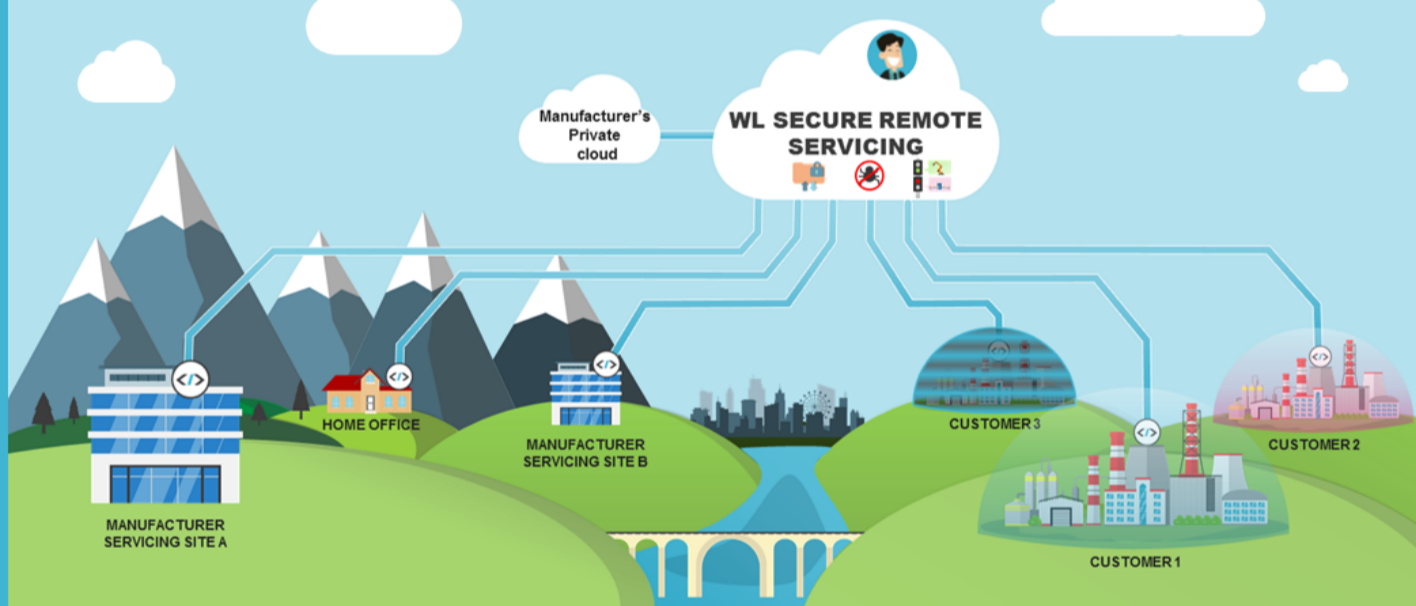


Remote maintenance has become key to increase your overall equipment efficiency (OEE) and fully optimize machine uptime to your customers. However, delivering excellent after-sales service also comes with challenges;

<p><b>MANAGE NUMEROUS AND VARIOUS CONNECTIONS IN A COST EFFICIENT WAY</b></p>	
	<p><b>ORCHESTRATE CONNECTIONS IN AN AGILE WAY</b></p>
<p><b>COMPLY WITH YOUR CUSTOMERS' SECURITY POLICIES</b></p>	<p>IEC 62443 ONLY <b>NO TRESPASSING</b></p>
	<p><b>COMPLY WITH REGULATIONS</b></p>
<p><b>DEAL WITH THE CONNECTIVITY CONSTRAINTS ON YOUR CUSTOMERS SITES</b></p>	
	<p><b>DEAL WITH YOUR LEGACY EQUIPMENTS &amp; SOFTWARE</b></p>

Worldline, world-class leader in secure payments and transactional services, can provide you with all the answers to help you remotely support your service team and customers in a **SECURE**, **EASY** and **EFFICIENT** way !

## A ZERO TRUST-BASED, HIGHLY FLEXIBLE AND PROVEN CONNECTIVITY ORCHESTRATOR WITH SMART ADDITIONAL FEATURES FOR OPTIMIZING AND GROWING YOUR SERVICES



### CENTRALIZE, HARMONIZE AND SECURE CONNECTIVITY

- Simplify and harmonize connectivity to your customers with a centralized and flexible solution
- Benefit from a proven robust, mature and scalable solution
- One tunnel for one purpose
- Convey any application
- Trace sessions meta-data
- Benefit from IEC 62443 readiness, ISO 27001 certified operations, Worldline's expertise in Trusted Services

### GO BEYOND STANDARD CONNECTIVITY !

- Powerful authorization engine
- Just integrate with your own systems
- Connect legacy systems with convenience "last mile" features
- Off the shelf and customized Tunneling templates to speed up connection set-up
- Integrated File Transfers for orchestrating and securing use cases relying on data transfers
- Option: highly flexible monitoring for IT/IoT/OT
- Data Privacy enforcement mechanisms

## PROVEN TRACK RECORD

**15+**  
years

**543K+**  
machines connected

**190**  
countries served

**20M**  
remote sessions/month

**25TB+**  
telemetry data/month

**30K+**  
users

**5M+**  
users access/month

**8TB+**  
downloaded machine data/month

**CONTACT US:**  
[claus.uellendall@worldline.com](mailto:claus.uellendall@worldline.com)

**Worldline**